

# women in the NHS



43

43 is the average age of women working in the NHS, the same as that for men<sup>3</sup>



81% of non-medical staff are women<sup>2</sup>



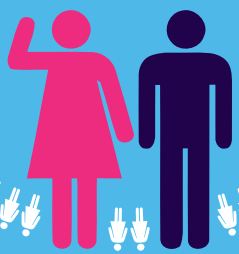
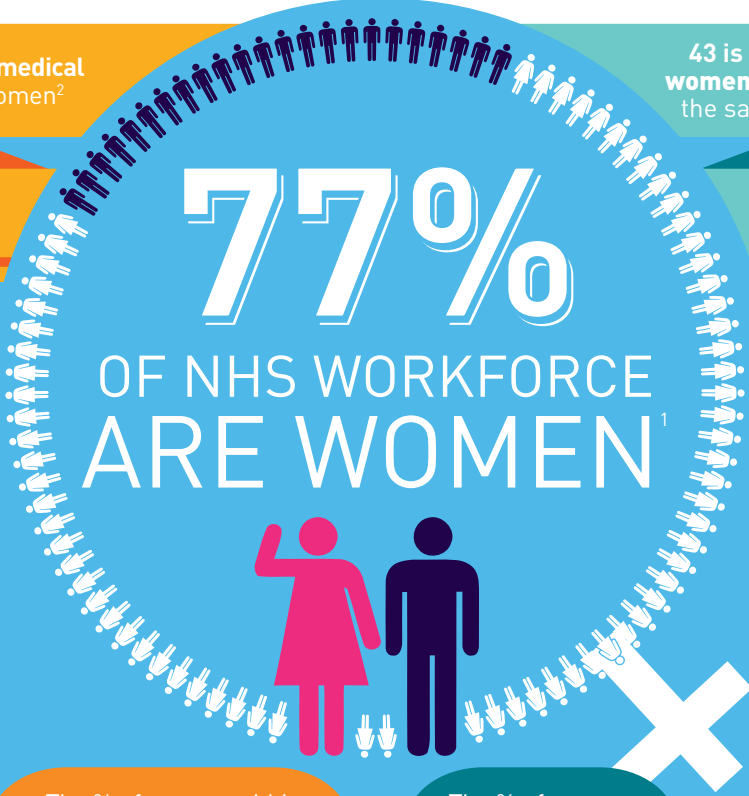
7% of female staff are doctors and dentists<sup>2</sup>



2/3 of women in the NHS work full time<sup>4</sup>

83% of women in medical and dental grades work 30 hours or more<sup>3</sup>

77%  
OF NHS WORKFORCE  
ARE WOMEN<sup>1</sup>



41%  
of CHIEF EXECUTIVES  
ARE WOMEN<sup>3</sup>



9% of women working in the NHS were born outside the UK<sup>3</sup>



Female nurses and midwives who trained outside the UK make up 11% of the register, that's 73,923 people<sup>6</sup>

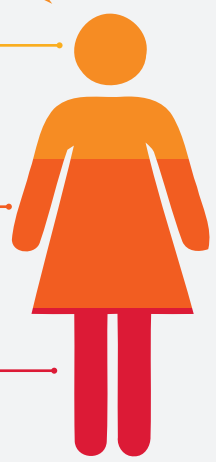
The % of women within each non-medical Agenda for Change band<sup>5</sup>

The % of women within each medical and dental grade<sup>1</sup>

69%  
Bands 8a to 9

83%  
Bands 5 to 7

81%  
Bands 1 to 4

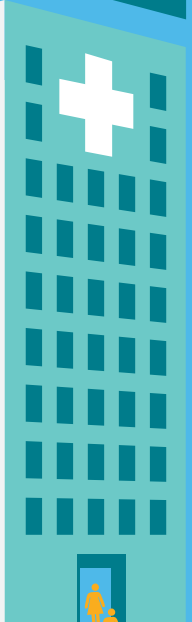
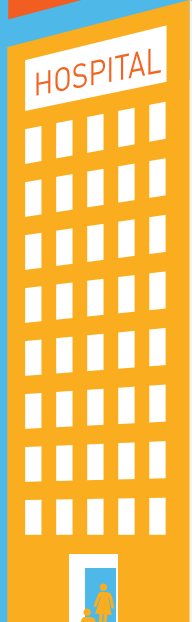
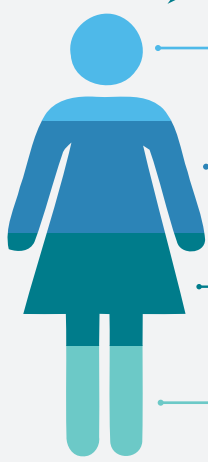


49%  
General practitioners

32%  
Consultants

52%  
Registrars

59%  
Doctors in training  
(excl. registrars)



15% of women in the NHS are from BME backgrounds<sup>3</sup>



1. Based on all HCHS staff as well as GP practitioners. Sept 2012 workforce census.  
2. Sept 2012 workforce census.

3. HCHS staff, NHS Employers estimate, Sept 2012.  
4. HCHS staff, NHS Employers estimate, April 2013.

5. Oct 2013 monthly provisional statistics. Kindly provided by HSCIC.  
6. NMC, March 2014.  
All statistics are for England Only